

The New York Times

July 25, 2008

Emerging Artists



"Frost" (2007) by Cosme Herrera. Photo: Courtesy of Cosme Herrera and The Bronx Museum of the Arts



1945, Weer bijeen--Veeteeltstraat 95
Foto genomen door Mark Zurel



"Lamp" (2007) by Margarida Correia. Photo: Courtesy of Margarida Correia and The Bronx Museum of the Arts



“Brooklyn View I” (2005) by Giuseppe Luciani. Photo: Courtesy of Giuseppe Luciani and The Bronx Museum of the Arts

Giuseppe Luciani's tough, radiant views of backyards and buildings outside his Brooklyn apartment are striking for their flat compositions, strong color and slightly awkward brushwork.



“La Lutxona” (“The Go-Getter”), 2007 by Blanka Amezkua. Photo: Courtesy of Blanka Amezkua and The Bronx Museum of the Arts

Blanka Amezkua appropriates the female protagonists from Mexican comic books, converting their fierce images into large, robust embroideries that exude a fiery wit and are not overly beholden to Roy Lichtenstein.

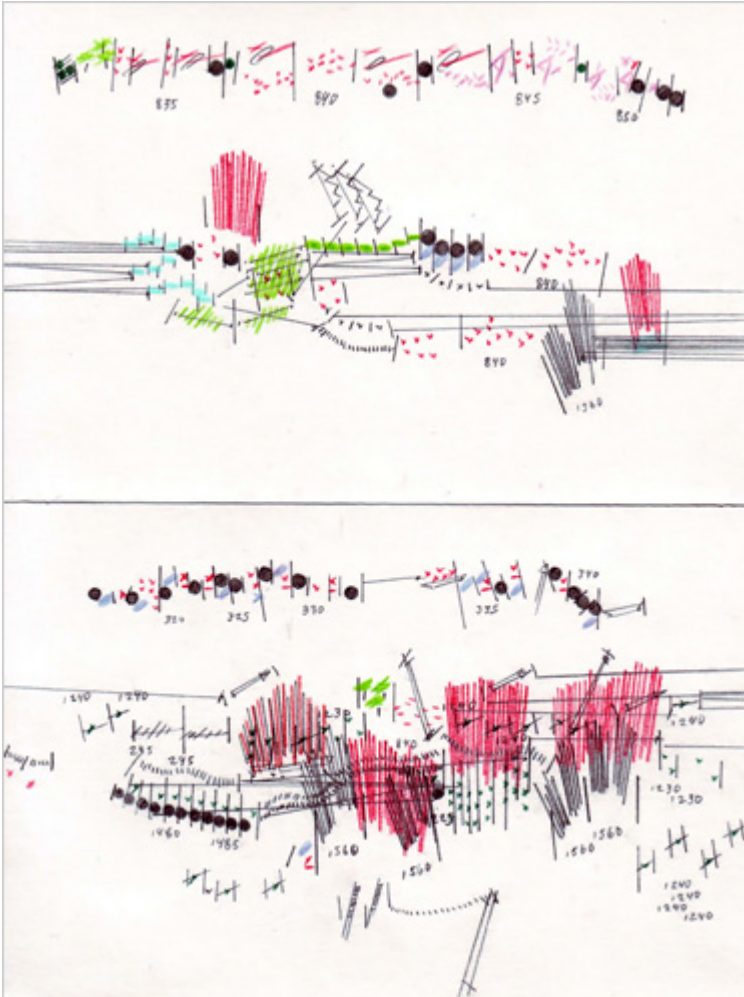


Photo: Courtesy of Brian Lund and The Bronx Museum of the Arts

The most successful conceptual art here is made by Brian Lund, who reduces the action of movies to a shorthand of abstract scribbles, lines, dots and dashes. The drawings are visually compelling, and you get a sense of movies as a series of conventions and codes, but also as a form of choreography.

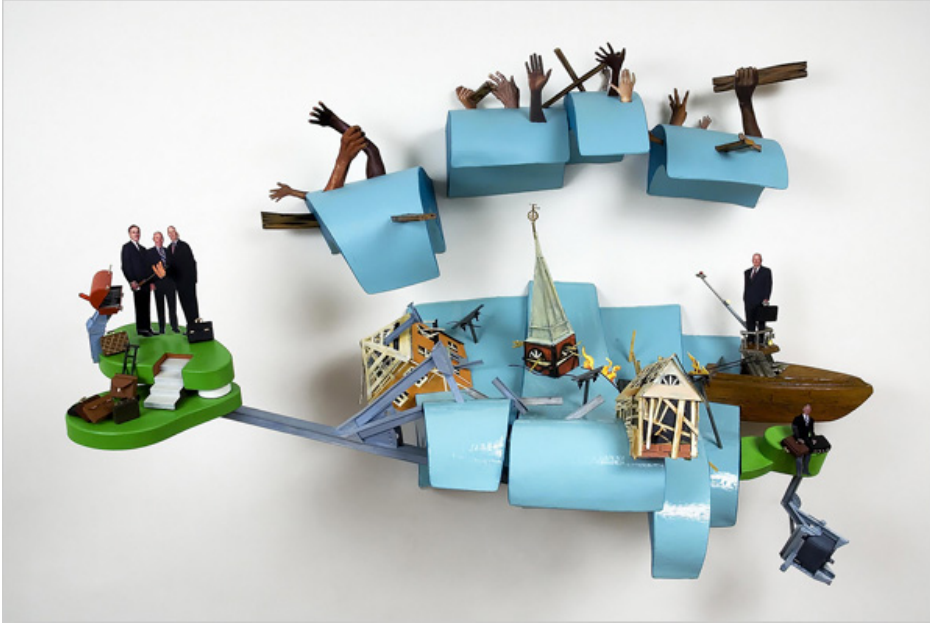


Photo: Courtesy of Bill Lohre and The Bronx Museum of the Arts

Bill Lohre's "Wet Spot" consists of a series of small painted wall reliefs that you quickly realize depict the effects of Hurricane Katrina.

At left, top, little cutouts of white men in suits are safe and dry. Bottom, shattered houses, debris and non-white people in desperate straits are buffeted by bright blue waves.

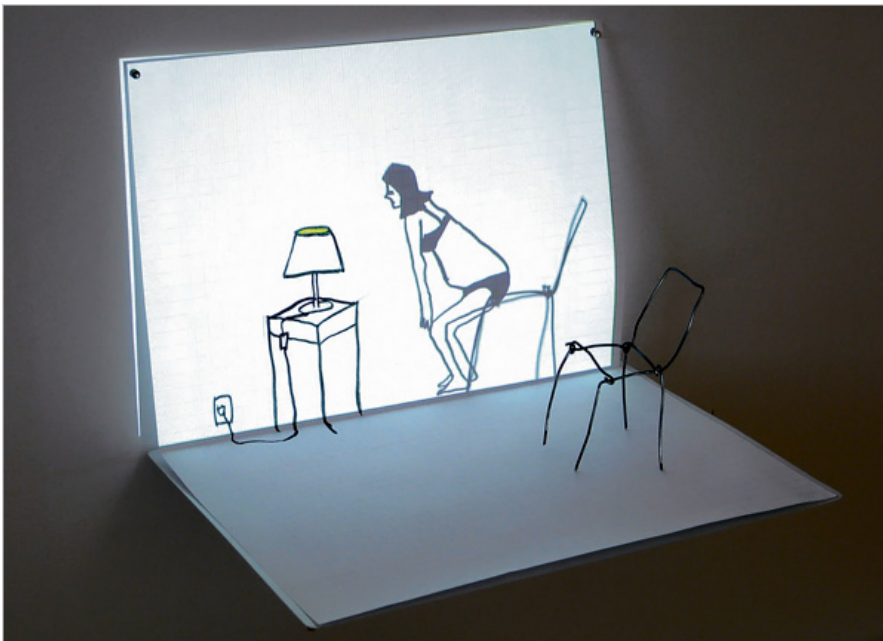
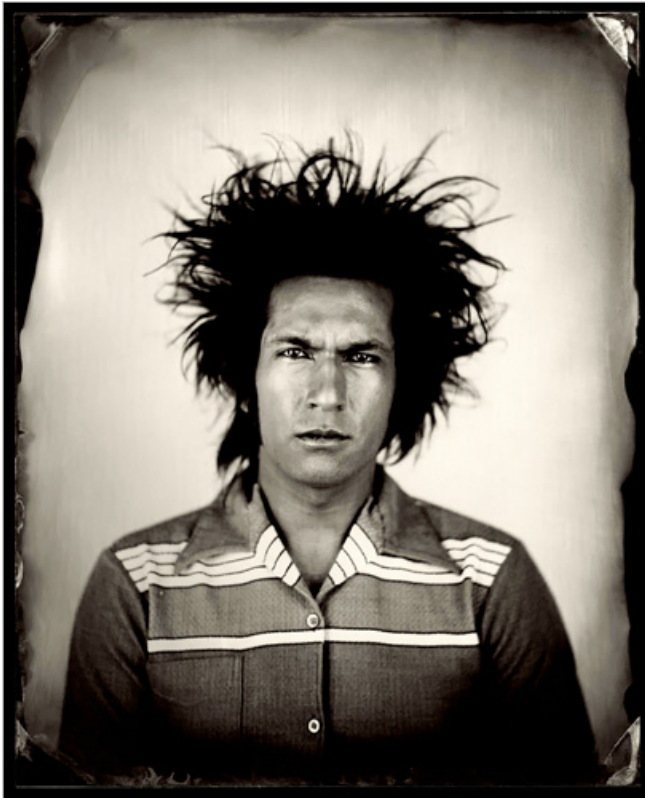


Photo: Courtesy of Jeanne Verdoux and The Bronx Museum of the Arts

In Jeanne Verdoux's "Living Room," a projection repeatedly shows a pregnant woman rising from her chair and switching on a lamp. Two cones of yellow light appear and the

scene goes dark, revealing that while the woman and her lamp are drawn animation, her chair is made of real wire.



"Justin" (2007) by Kelly Anderson-Staley. Photo: Courtesy of Kelly Anderson-Staley and The Bronx Museum of the Arts